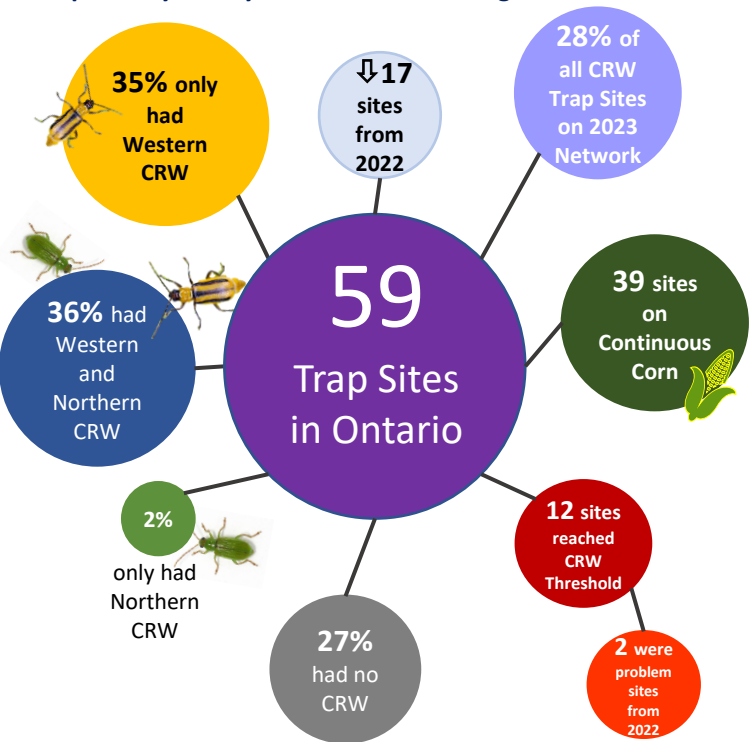


# 2023 Ontario CRW Trap Network Highlights

Prepared by Tracey Baute, OMAFRA-Ridgetown



214 Trap Sites in 2023 across 12 states and provinces; 59 in Ontario.

2023 rootworm populations were 60% lower in Ontario than in 2022.

12 Ontario sites reached the CRW trap threshold of 2 beetles/trap/day. All in continuous corn, except one that was surrounded by continuous corn fields.

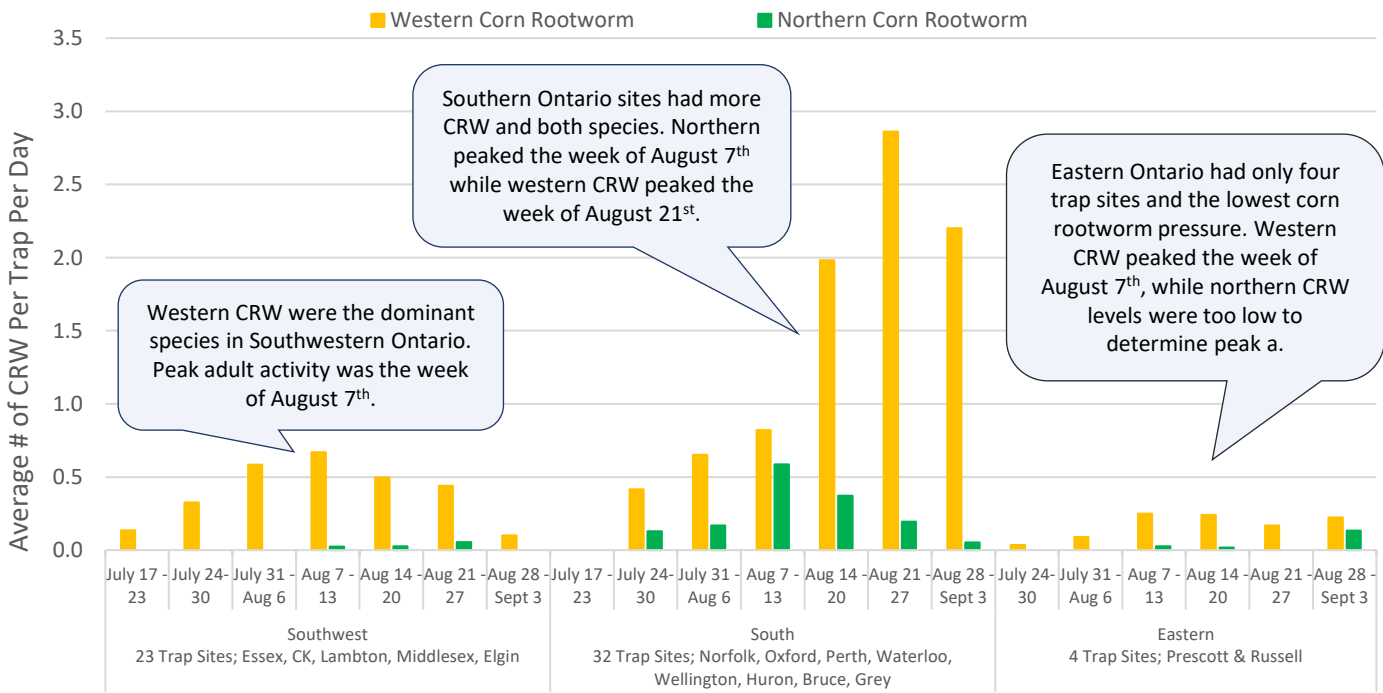
Fields that reached threshold should rotate out of corn for at least one year to knock back resistant populations.

27% of the sites captured 0 beetles, including all sites in Essex, Lambton and Norfolk counties.

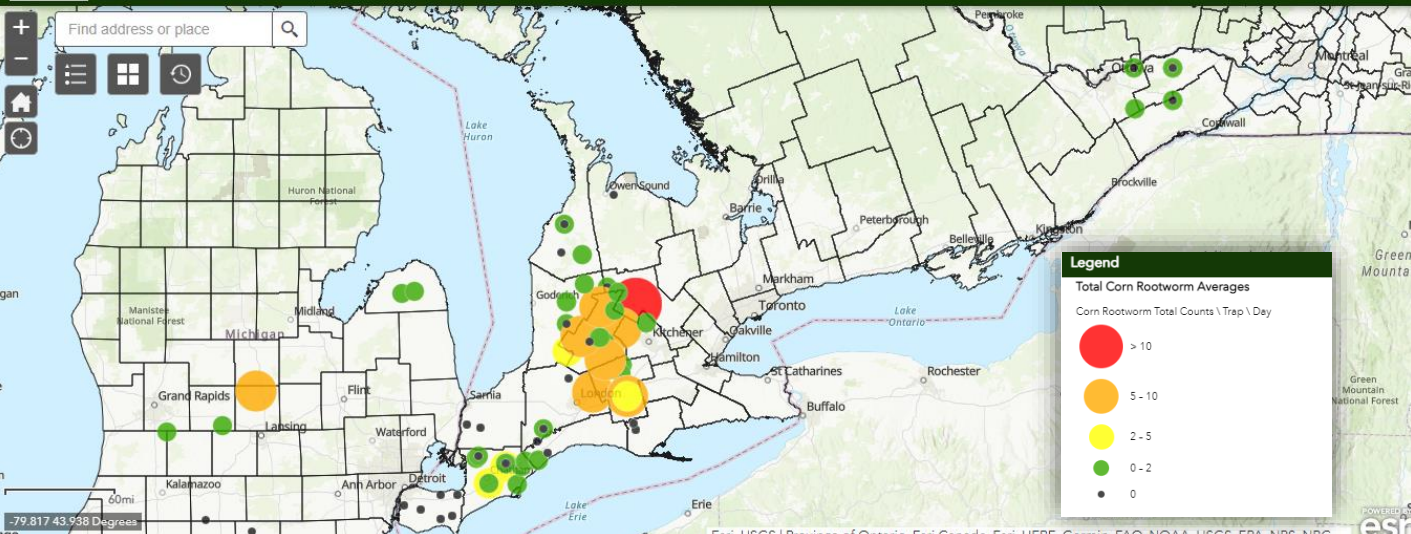
Thank you to GFO, ABSTC and OMAFRA for funding the trap supplies. Thank you trap participants for monitoring your traps this year.

A more detailed report for the 2023 Regional CRW Monitoring Network will be available at: <https://cornrootworm.extension.iastate.edu/adult-trapping-network>

Weekly Average of Corn Rootworm Per Trap Per Day by Region



## Ontario Total Corn Rootworm



**2023 Ontario CRW trap sites on the Corn Rootworm Adult Monitoring Network. Sites with yellow, orange or red circles reached the 2 CRW Beetles Per Trap Per Day Threshold.**

Counties at risk in 2024, based on CRW/Trap/Day in 2023:

**High**  
2-4.9 CRW/Trap/Day  
**Chatham-Kent**  
**Perth**  
**Huron**

**Very High**  
5 - 9.9 CRW/Trap/Day  
**Middlesex**  
**Oxford**  
**Waterloo**

**Extreme**  
>10 CRW/Trap/Day  
**Perth**  
**Wellington**

**High to Extremely High CRW Trap Sites (Problem Fields)**  
12 trap sites (20%) reached the CRW trap threshold of 2 beetles/trap/day. Two (in green) also reached threshold in 2022. Three additional sites were close to reaching threshold and should be monitored closely in 2024. All of these sites should consider rotating out of corn for one year to knock back populations that are likely resistant to Bt-RW hybrids.

